

ABOUT US:

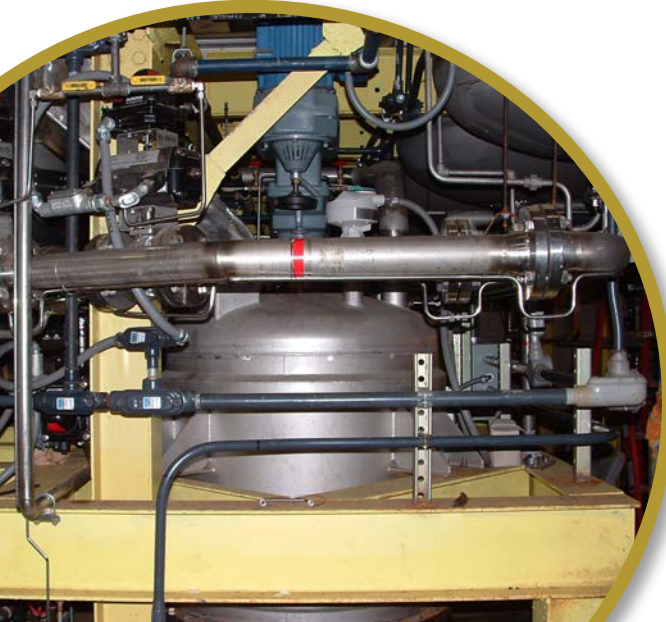
**WACO HAS BEEN PROVIDING
SUPERIOR CONTRACTING
SERVICES SINCE 1963**



OTHER LOCATIONS:

Waco, Inc. is a privately-owned, diversified contracting firm providing a full scope of mechanical construction and maintenance services.

Headquartered in Richmond, Virginia, we have multiple locations to serve the East Coast and Midwest regions of the United States. With a long-standing reputation of excellence and years of experience, we are confident in our ability to solve your problems through progressive and innovative solutions.



38592 Brett Way, Suite 7
Mechanicsville, MD 20659
Phone: (301) 290-1333
Toll Free: (888) 742-7219

844 Cottontail Trail
Mt. Crawford, VA 22841
Phone: (540) 434-7390

1326 Cavalier Blvd.
Chesapeake, VA 23323
Phone: (757) 558-3100

11839-A Canon Blvd.
Newport News, VA 23606
Phone: (757) 873-2205

1520 West Main Street
Radford, Virginia 24141
Phone: (540) 633-6311

208 East Seaboard Street
Bladenboro, NC 28320
Phone: (910) 648-5468

710 West Locust Street
Covington, VA 24426
Phone: (540) 962-5161

172-8 Imboden Drive
Winchester, VA 22603
Phone: (540) 535-7250



MECHANICAL SERVICES



www.wacoinc.net

CORPORATE OFFICE:

5450 Lewis Road
Sandston, VA 23150
(804) 222-8440



Mechanical Construction/ Maintenance Services

TURN-KEY PERFORMANCE

Waco Inc. is an accomplished mechanical construction and maintenance contractor. Since 1963, we have served businesses, industries, and institutions while completing complex projects for some of the nation's largest, most established Fortune 500 companies.

Utilizing our own trained workforce, Waco self-performs a diverse range of industrial mechanical services. We complete turn-key projects economically and without trade disruption or scheduling issues.

Waco's purpose is to bring unrivaled expertise to every job, from large, multi-faceted projects to short-term, individual tasks.

We Provide:

- Process Piping
- Process Equipment - Erection, Relocation, Alignment
- Mechanical Demolition
- Material Handling, Erection, Alignment
- Welding - National Board ASME Certified
- Utility Piping Systems
- Breeching / Duct Work
- Work Platforms - Structural Steel
- Pressure Vessels: R Stamp
- Boilers: Field Erected or Package Installation
- Field Engineering
- Augment Customer's Staff (Technical or Craft)
- Maintenance (Ongoing or Shutdown)
- Engineering, Administrative, Pipe Fitting, Welding, Rigging, Millwright, Electrical, Sheet Metal, Carpentry, Concrete Masonry



www.wacoinc.net

